



## Madoc Close | London | NW2

Asking price £499,950 | Leasehold

 1  1  1  B

**ADN**  
RESIDENTIAL

A modern and larger than average (669 sq ft) one bedroom apartment, set within the luxurious and gated Tudor House development.

This beautifully designed apartment, which offers well-proportioned accommodation, features a bright and spacious open plan living room with Poggenpohl kitchen and Miele appliances, principal bedroom with built in wardrobes, an en-suite bathroom and additional guest W/C. The apartment further benefits from a Juliet balcony and a designated parking space. Tudor House is ideally located 0.7m to Golders Green underground station (Northern Line) and 1.2m to Hampstead Heath.

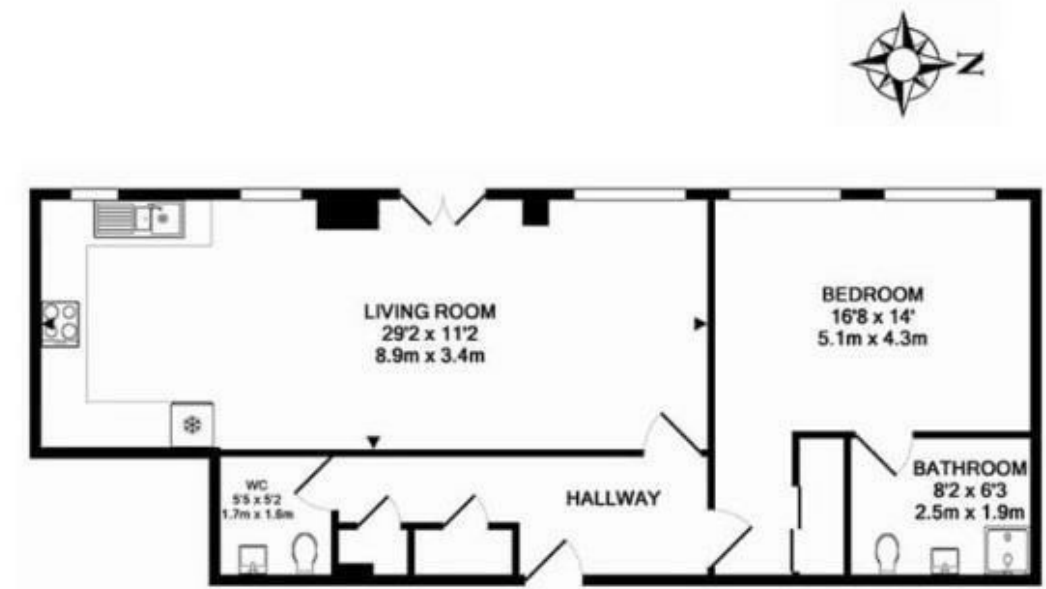
- 
- One Bedroom
  - En-suite Shower Room
  - Juliet Balcony
  - First Floor
  - One Bathroom
  - Guest WC
  - Gated Development
  - Private Parking
- 

Council Tax Band: D  
EPC: C

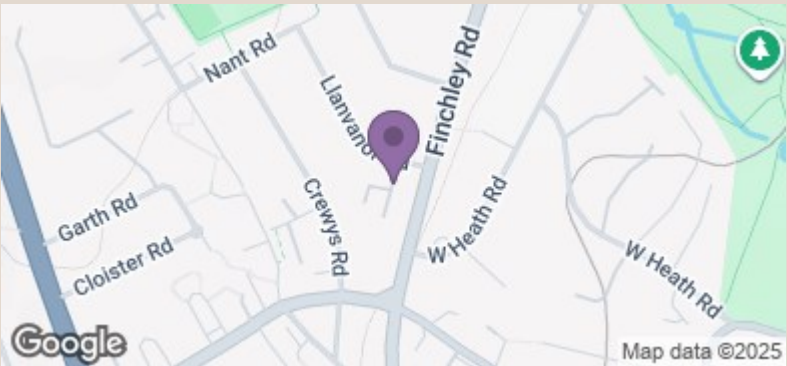








**TUDOR HOUSE NW2**  
TOTAL APPROX. FLOOR AREA 669 SQ.FT. (62.1 SQ.M.)  
Measurements are approximate. Not to scale. Illustrative purposes only  
For Illustration Purposes Only Not To Scale Floor Plans produced for Stones Residential by Chik Chak Limited  
This floor plan is intended as a guide only and its accuracy is in no way guaranteed.  
Prospective purchasers should satisfy themselves by inspection and relevant reporting of a property prior to purchase. This document does not form part of a legal contract. Areas, measurements or distances quoted are approximate and should in no way be the basis of any sale.



Energy Efficiency Rating		
	Current	Potential
Very energy efficient - lower running costs		
(92 plus) A		
(81-91) B	84	84
(69-80) C		
(55-68) D		
(39-54) E		
(21-38) F		
(1-20) G		
Not energy efficient - higher running costs		
England & Wales	EU Directive 2002/91/EC	